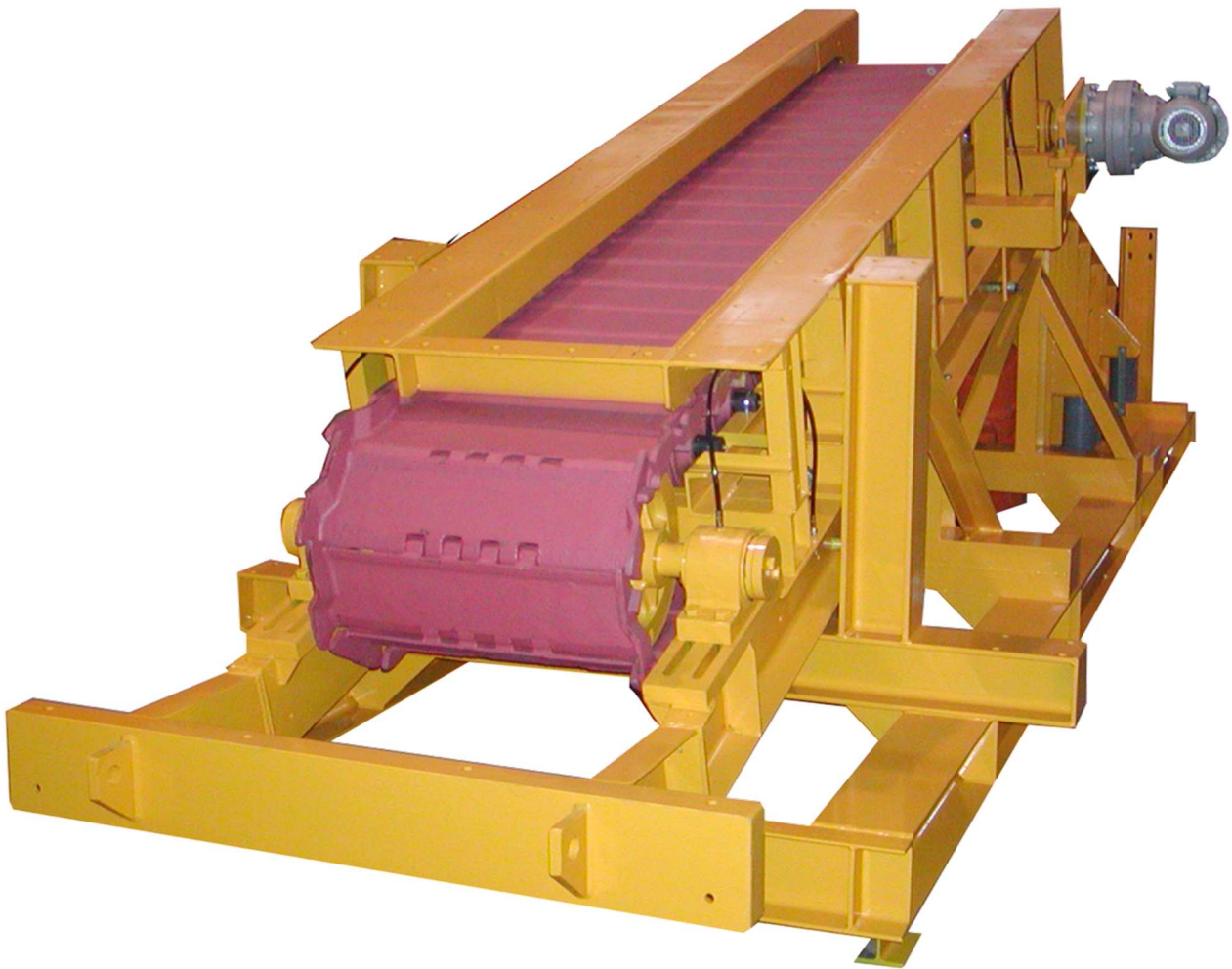


APRON FEEDERS “AP” SERIES

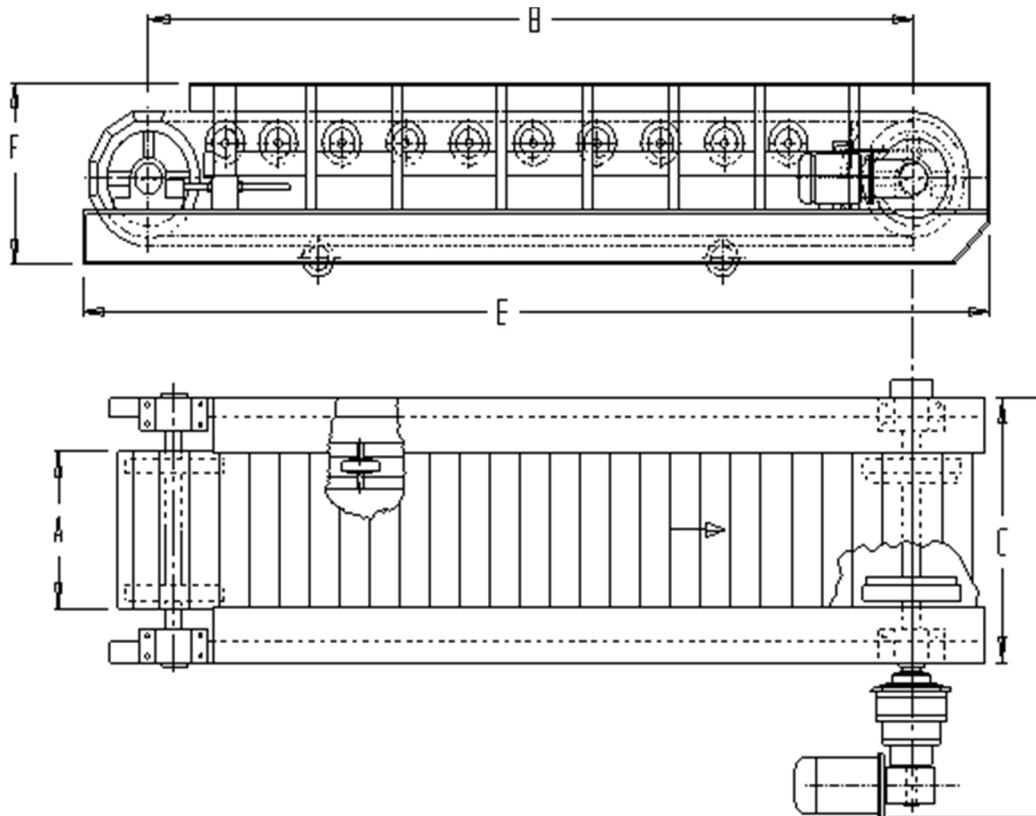


SUITABLE FOR CONVEYING AND EXTRACTING LARGE PIECES OF MATERIAL



- high capacity of extracting even large pieces of material in the presence of every kind of material
- capacity control through speed regulation
- low costs of maintenance thanks to the high resistant mechanical system

STANDARD SIZES FOR APRON FEEDERS



The apron feeders of the "AP" series are driven by a planetary gearmotor fitted directly onto the drive shaft. The motor is servo-ventilated. The sturdy plates are cast in quality steel. The transmission shafts of the catenary rotate on bushes keyed into the steel supports fitted with greasers. The upper wheels and the lower support wheels are made of steel, bushed on a shaft with steel bushings and also fitted with grease nipples. The speed variation can be obtained by applying the inverter in the control panel.

TYPE*	A (mm)	B (mm)	C (mm)	D (mm)	E (mm)	F (mm)	Weight (Kg)	Motor power (Hp)	Max. capacity (mc/h)
AP65-27	650	2700	1040	1640	3390	740	3250	5,5	80
AP65-36	650	3600	1040	1640	4290	740	3950	5,5	80
AP65-45	650	4500	1040	1640	5190	740	4700	5,5	80
AP65-54	650	5400	1040	1640	6090	740	5650	7,5	80
AP85-36	850	3600	1260	1830	4270	780	4400	7,5	140
AP85-45	850	4500	1260	1830	5170	780	5150	7,5	140
AP85-54	850	5400	1260	1830	6070	780	6050	10,0	140

* The models shown are standards that can be adapted and modified according to specific customer needs.