

BELT FEEDERS "AN" SERIES

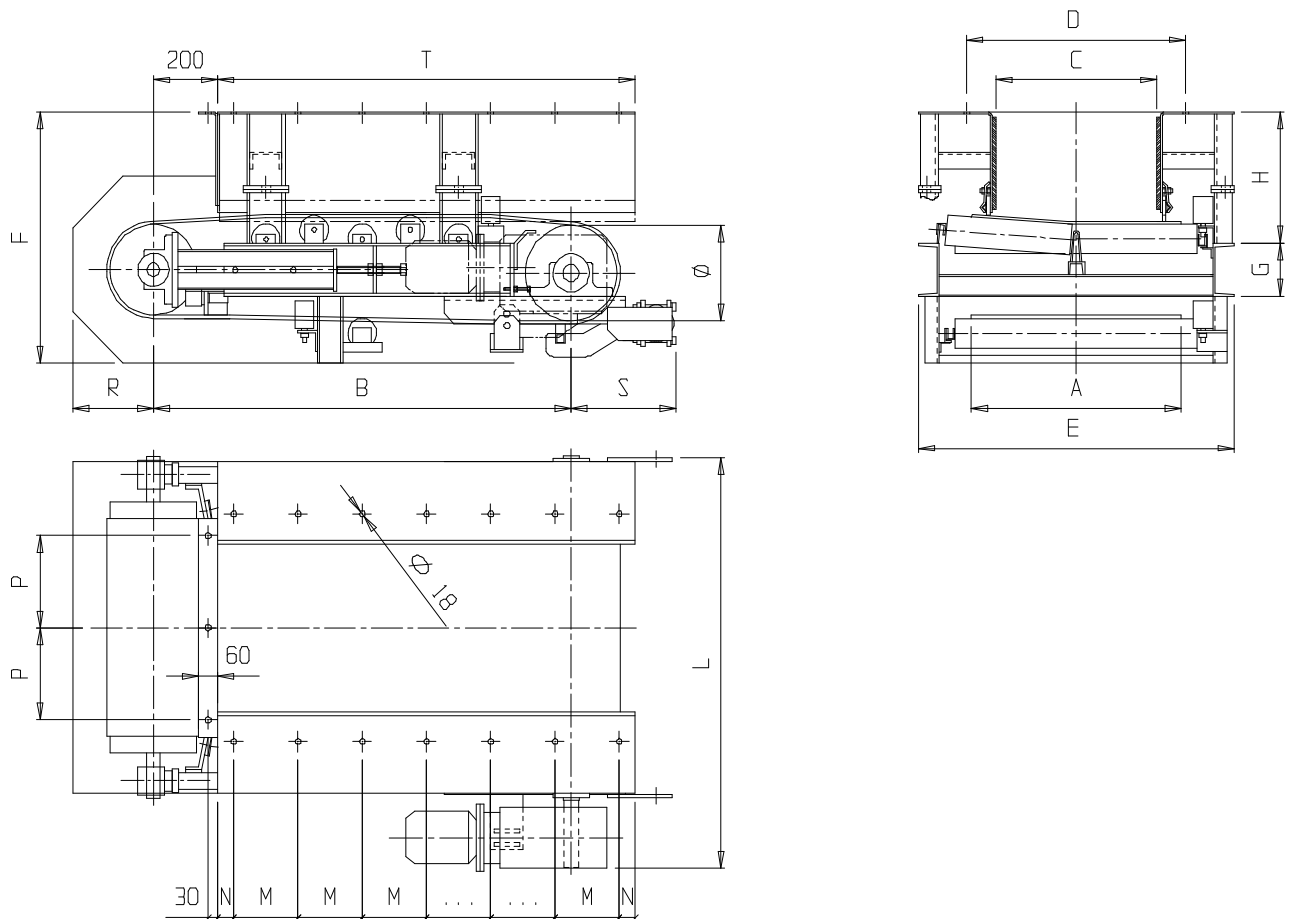


FOR FEEDING AND EXTRACTING MATERIAL

suitable for the extraction from feed hoppers
simple, robust and reliable
continuous and regular material feeding



STANDARD SIZES FOR BELT FEEDERS



For the “AN” series belt feeders, the material is transported on a sturdy, slow-moving belt, whose capacity is adjustable. It is possible to apply a layer sensor to signal the presence or absence of material on the belt.

TYPE*	A (mm)	B (mm)	C (mm)	D (mm)	E (mm)	F (mm)	G (mm)	H (mm)	L (mm)	M for n. of holes (mm)	N (mm)	P (mm)	R (mm)	S (mm)	T (mm)	\varnothing (mm)	Max. capacity (mc/h)	Power (Kw)	Weight (Kg)
AN65/130-0,7	650	1300	520	680	980	750	160	390	1230	200x6	50	275	250	330	1300	330	70	0,75	500
AN65/130-1	650	1300	520	680	980	750	160	390	1230	200x6	50	275	250	330	1300	330	100	1,1	510
AN80/160-1	800	1600	640	800	1200	750	160	390	1450	200x7	100	300	250	330	1600	330	100	1,1	750
AN80/160-2	800	1600	640	800	1200	750	160	390	1450	200x7	100	300	250	330	1600	330	140	1,5	760
AN100/200-2	1000	2000	800	960	1400	800	200	420	1700	200x9	100	350	250	330	2000	330	130	2,2	1170
AN100/200-3	1000	2000	800	960	1400	800	200	420	1700	200x9	100	350	250	330	2000	330	180	3,0	1190
AN120/240-3	1200	2400	960	1120	1650	850	200	420	1950	200x11	100	400	300	330	2400	330	160	3,0	1690
AN120/240-4	1200	2400	960	1120	1650	850	200	420	1950	200x11	100	400	300	330	2400	330	220	4,0	1710

* The models shown are standards that can be adapted and modified according to specific customer needs.